



## Maximum support 4/3 inch (23mm) target surface camera

- Maximum support 4/3" industrial camera
- Bilateral telecentric design, ultra-high telecentricity, can improve the measurement accuracy by several times
- Optional iris diaphragm can effectively balance depth of field and resolution
- Can provide specially matched parallel light sources to improve the uniformity of illumination
- Some lenses support internal L90 steering, saving installation space
- This series of lenses have been precisely calibrated and can provide a comprehensive test report
- High-precision workpiece detection and machine vision application

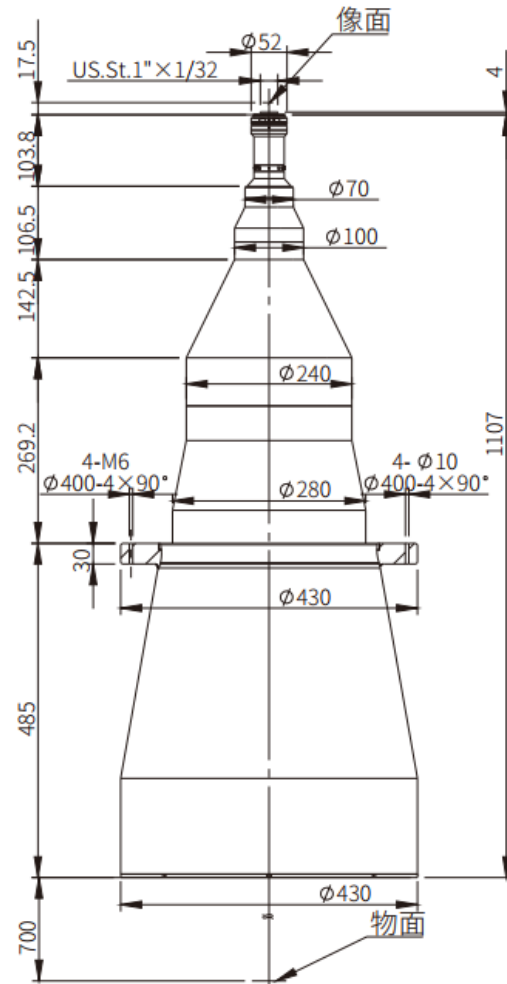


## Maximum support 4/3inch (23mm) target surface camera

Model	Chip Type	Optical structure	WD (mm)	Mag (X)	Chip length	Chip width	diagonal	Long object FOV	Wide FOV	Total length of lens (mm)	Maximum Diameter (mm)	O/I (mm)	Lens interface	Optical distortion (%)	Resolution (μm)	aperture	DOF (mm)	Image field (mm)	Telecentricity (°)	Object field φ (mm)
XF-PTL39023-C	4/3"	Double Telecentric	700	0.0596	18	13.5	22.5	302	226.5	1107	430	1824.5	C	0.037	88.71	F8	244.7	23	0.04	385.9
XF-PTL35023-C	4/3"	Double Telecentric	540	0.0664	18	13.5	22.5	271.1	203.3	886.7	376	1444.2	C	0.036	79.47	F8	196.8	23	0.05	346.4
XF-PTL31023-C	4/3"	Double Telecentric	500	0.075	18	13.5	22.5	240	180	814.5	340	1332	C	0.035	70.42	F8	155.4	23	0.04	306.7
XF-PTL26823-C	4/3"	Double Telecentric	410	0.0868	18	13.5	22.5	207.4	155.5	748.1	300	1175.6	C	0.035	60.85	F8	115.5	23	0.04	265
XF-PTL23823-C	4/3"	Double Telecentric	410	0.0976	18	13.5	22.5	184.4	138.3	689.5	270	1117	C	0.019	54.1	F8	91.5	23	0.04	235.7
XF-PTL19523-C	4/3"	Double Telecentric	400	0.119	18	13.5	22.5	151.3	113.4	541.5	222	959	C	0.038	44.25	F8	61.9	23	0.04	193.3
XF-PTL18223-C	4/3"	Double Telecentric	398	0.128	18	13.5	22.5	140.6	105.5	515	210	930.5	C	0.038	41.41	F8	54.1	23	0.04	179.7
XF-PTL15223-C	4/3"	Double Telecentric	320	0.153	18	13.5	22.5	117.6	88.2	467.1	180	804.6	C	0.033	34.46	F8	37.6	23	0.04	150.3
XF-PTL13723-C	4/3"	Double Telecentric	280	0.17	18	13.5	22.5	105.9	79.4	428.1	166	725.6	C	0.031	31.13	F8	30.8	23	0.04	135.3
XF-PTL12223-C	4/3"	Double Telecentric	260	0.19	18	13.5	22.5	94.7	71.1	420	166	697.5	C	0.019	27.73	F8	24.4	23	0.04	121.1
XF-PTL11023-C	4/3"	Double Telecentric	250	0.211	18	13.5	22.5	85.3	64	381.4	130	648.9	C	0.015	25.04	F8	19.8	23	0.04	109
XF-PTL09223-C	4/3"	Double Telecentric	250	0.254	18	13.5	22.5	70.9	53.1	332.1	120	599.6	C	0.017	20.82	F8	13.7	23	0.04	90.6
XF-PTL08023-C	4/3"	Double Telecentric	180	0.29	18	13.5	22.5	62.1	46.6	307.4	104	504.9	C	0.013	18.18	F8	10.5	23	0.03	79.3
XF-PTL06523-C-VI	4/3"	Double Telecentric	160	0.357	18	13.5	22.5	50.4	37.8	272.8	90	450.3	C	0.013	12-83.11	F6.5-F45	5.6-39.2	23	0.03	64.4
XF-PTL05523-C-VI	4/3"	Double Telecentric	138	0.422	18	13.5	22.5	42.7	32	257.1	79	412.6	C	0.026	10.2-70.23	F6.5-F45	4-28	23	0.04	54.5
XF-PTL04523-C-VI	4/3"	Double Telecentric	120	0.516	18	13.5	22.5	34.9	26.2	214.1	70	351.6	C	0.017	8.3-57.47	F6.5-F45	2.7-18.8	23	0.03	44.6
XF-PTL03723-C-VI	4/3"	Double Telecentric	110	0.634	18	13.5	22.5	28.4	21.3	182	70	309.5	C	0.023	6.8-46.82	F6.5-F45	1.8-12.5	23	0.03	36.3

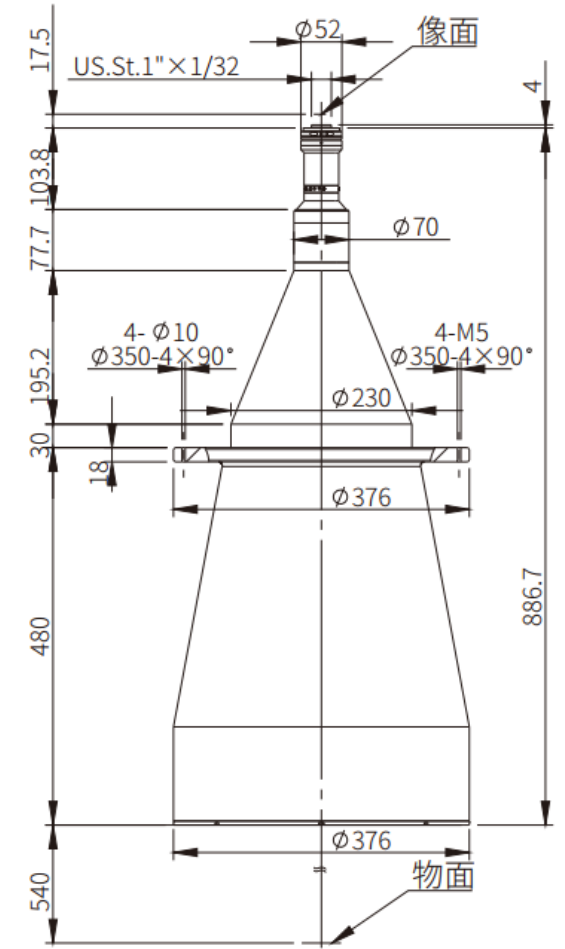
## XF-PTL39023-C

Chip type	4/3"
Chip length	18
Chip width	13.5
diagonal	22.5
Long object field of view	302
Wide field of view	226.5
Total length of lens (mm)	1107
Maximum diameter (mm)	430
O/I (mm)	1824.5
Lens interface	C Mount
Optical distortion (%)	0.037
Resolution (μm)	88.71
aperture	F8
Depth of field (mm)	244.7
Image field (mm)	23
Telecentric design value (°)	0.04
Object field φ (mm)	385.9
Working distance (mm)	700
Optical structure	Double telecentric
Magnification (X)	0.0596



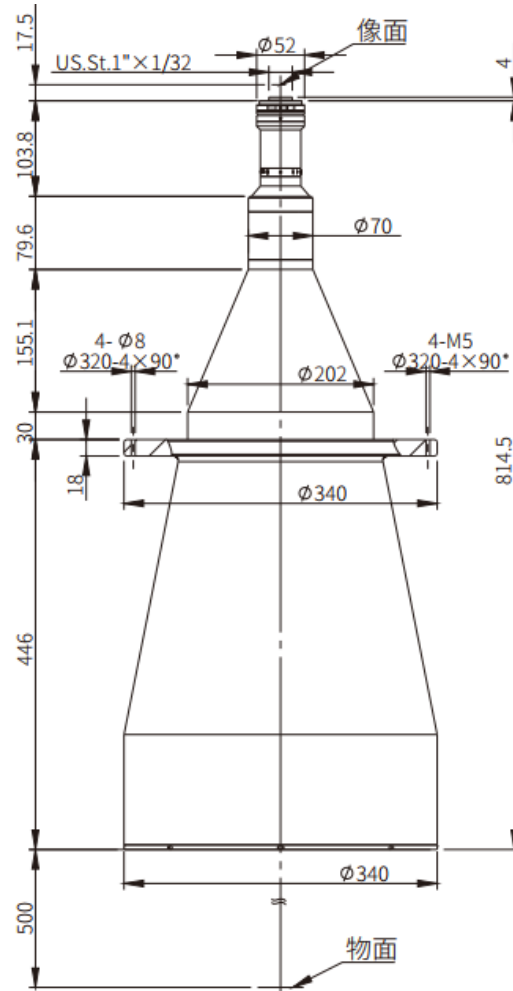
## XF-PTL35023-C

Chip type	4/3"
Chip length	18
Chip width	13.5
diagonal	22.5
Long object field of view	271.1
Wide field of view	203.3
Total length of lens (mm)	886.7
Maximum diameter (mm)	376
O/I (mm)	1444.2
Lens interface	C Mount
Optical distortion (%)	0.036
Resolution (μm)	79.47
aperture	F8
Depth of field (mm)	196.8
Image field (mm)	23
Telecentric design value (°)	0.05
Object field φ (mm)	346.4
Working distance (mm)	540
Optical structure	Double telecentric
Magnification (X)	0.0664



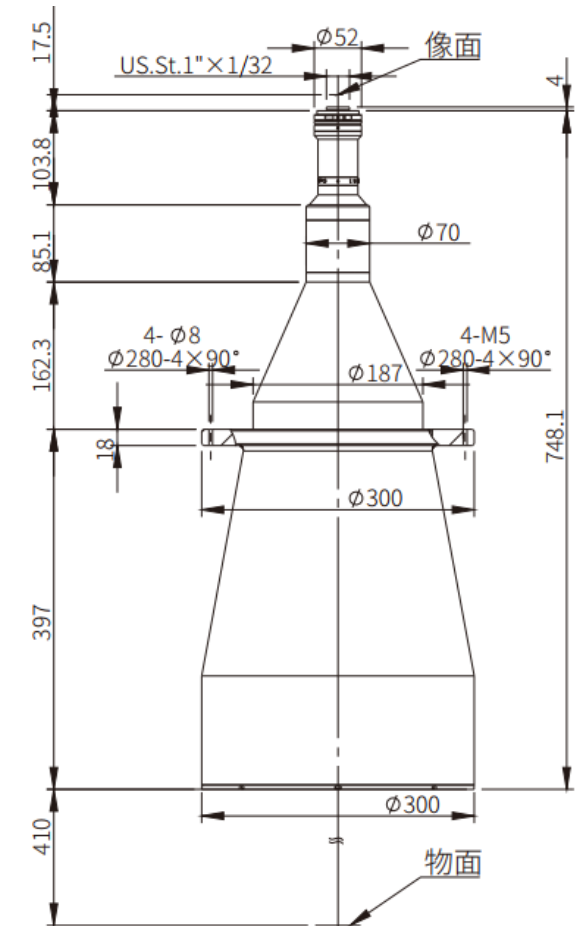
## XF-PTL31023-C

Chip type	4/3"
Chip length	18
Chip width	13.5
diagonal	22.5
Long object field of view	240
Wide field of view	180
Total length of lens (mm)	814.5
Maximum diameter (mm)	340
O/I (mm)	1332
Lens interface	C Mount
Optical distortion (%)	0.035
Resolution (μm)	70.42
aperture	F8
Depth of field (mm)	155.4
Image field (mm)	23
Telecentric design value (°)	0.04
Object field φ (mm)	306.7
Working distance (mm)	500
Optical structure	Double telecentric
Magnification (X)	0.075



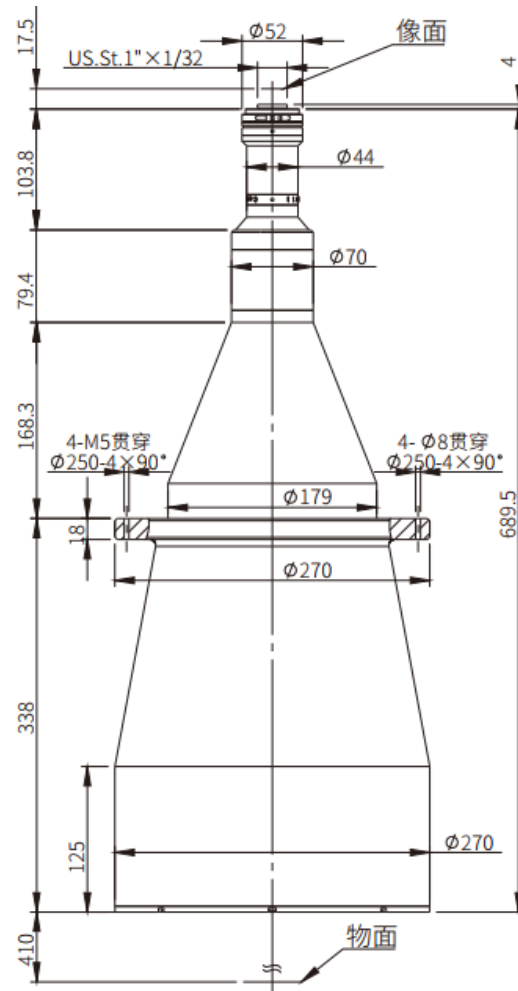
## XF-PTL26823-C

Chip type	4/3"
Chip length	18
Chip width	13.5
diagonal	22.5
Long object field of view	207.4
Wide field of view	155.5
Total length of lens (mm)	748.1
Maximum diameter (mm)	300
O/I (mm)	1175.6
Lens interface	C Mount
Optical distortion (%)	0.035
Resolution (μm)	60.85
aperture	F8
Depth of field (mm)	115.5
Image field (mm)	23
Telecentric design value (°)	0.04
Object field φ (mm)	265
Working distance (mm)	410
Optical structure	Double telecentric
Magnification (X)	0.0868



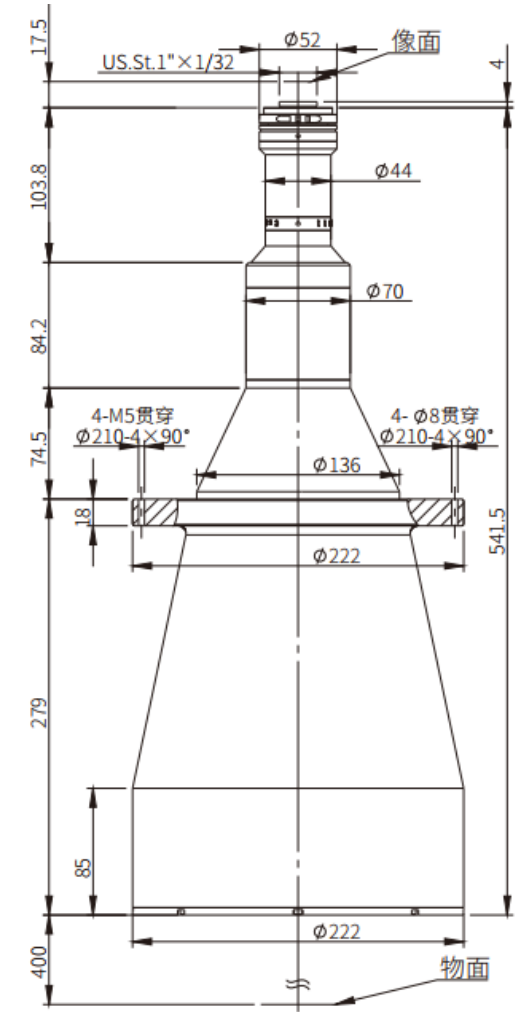
## XF-PTL23823-C

Chip type	4/3"
Chip length	18
Chip width	13.5
diagonal	22.5
Long object field of view	184.4
Wide field of view	138.3
Total length of lens (mm)	689.5
Maximum diameter (mm)	270
O/I (mm)	1117
Lens interface	C Mount
Optical distortion (%)	0.019
Resolution (μm)	54.1
aperture	F8
Depth of field (mm)	91.5
Image field (mm)	23
Telecentric design value (°)	0.04
Object field φ (mm)	235.7
Working distance (mm)	410
Optical structure	Double telecentric
Magnification (X)	0.0976



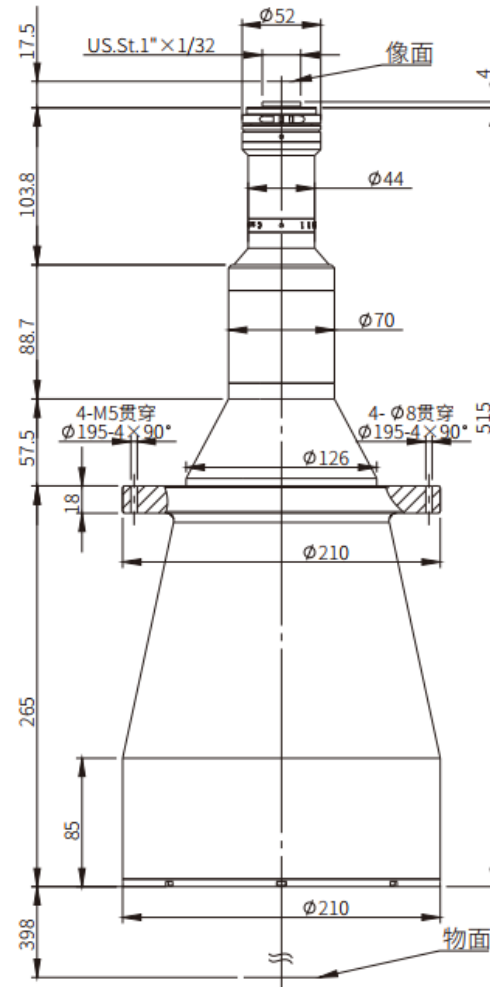
## XF-PTL19523-C

Chip type	4/3"
Chip length	18
Chip width	13.5
diagonal	22.5
Long object field of view	151.3
Wide field of view	113.4
Total length of lens (mm)	541.5
Maximum diameter (mm)	222
O/I (mm)	959
Lens interface	C Mount
Optical distortion (%)	0.038
Resolution (μm)	44.25
aperture	F8
Depth of field (mm)	61.9
Image field (mm)	23
Telecentric design value (°)	0.04
Object field φ (mm)	193.3
Working distance (mm)	400
Optical structure	Double telecentric
Magnification (X)	0.119



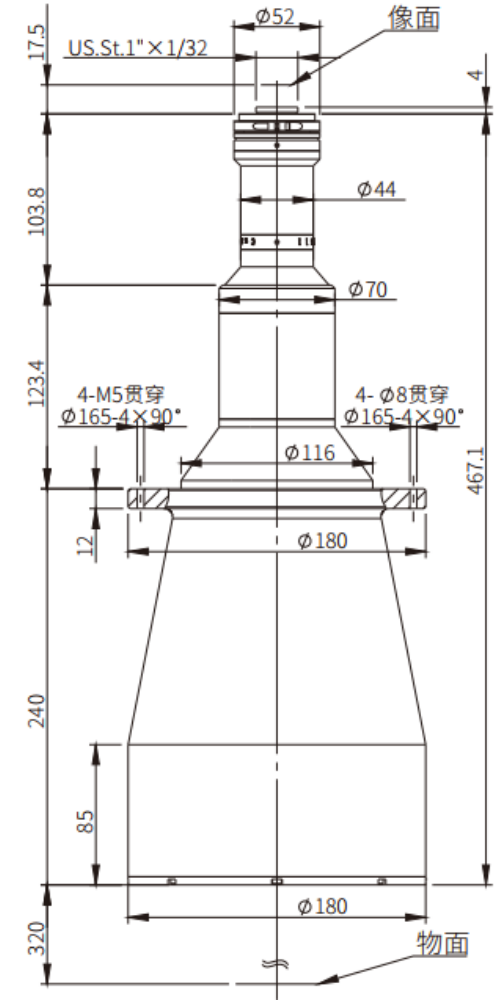
## XF-PTL18223-C

Chip type	4/3"
Chip length	18
Chip width	13.5
diagonal	22.5
Long object field of view	140.6
Wide field of view	105.5
Total length of lens (mm)	515
Maximum diameter (mm)	210
O/I (mm)	930.5
Lens interface	C Mount
Optical distortion (%)	0.038
Resolution (μm)	41.41
aperture	F8
Depth of field (mm)	54.1
Image field (mm)	23
Telecentric design value (°)	0.04
Object field φ (mm)	179.7
Working distance (mm)	398
Optical structure	Double telecentric
Magnification (X)	0.128



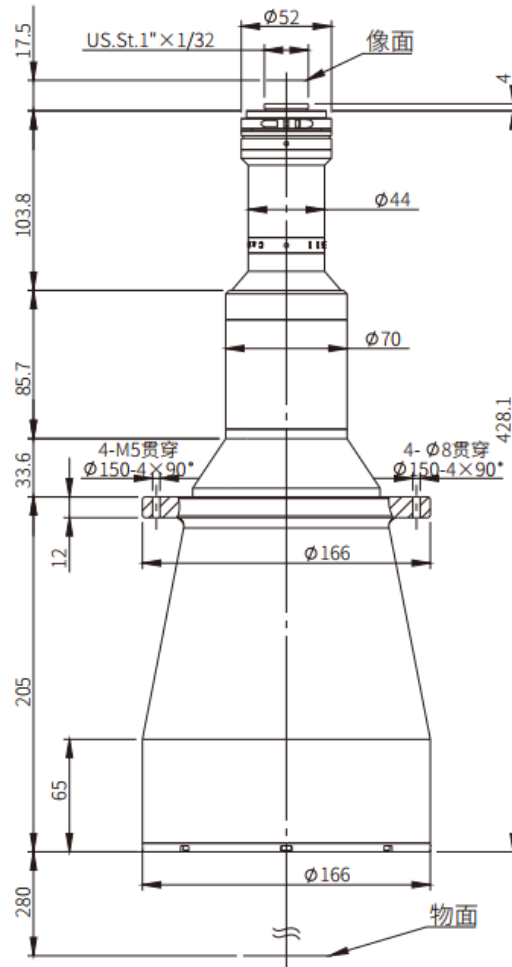
## XF-PTL15223-C

Chip type	4/3"
Chip length	18
Chip width	13.5
diagonal	22.5
Long object field of view	117.6
Wide field of view	88.2
Total length of lens (mm)	467.1
Maximum diameter (mm)	180
O/I (mm)	804.6
Lens interface	C Mount
Optical distortion (%)	0.033
Resolution (μm)	34.46
aperture	F8
Depth of field (mm)	37.6
Image field (mm)	23
Telecentric design value (°)	0.04
Object field φ (mm)	150.3
Working distance (mm)	320
Optical structure	Double telecentric
Magnification (X)	0.153



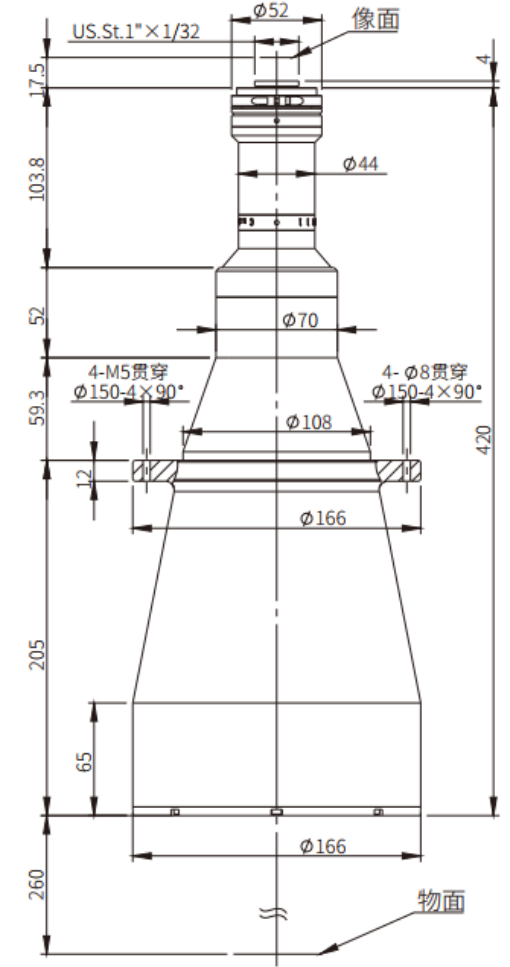
## XF-PTL13723-C

Chip type	4/3"
Chip length	18
Chip width	13.5
diagonal	22.5
Long object field of view	105.9
Wide field of view	79.4
Total length of lens (mm)	428.1
Maximum diameter (mm)	166
O/I (mm)	725.6
Lens interface	C Mount
Optical distortion (%)	0.031
Resolution (μm)	31.13
aperture	F8
Depth of field (mm)	30.8
Image field (mm)	23
Telecentric design value (°)	0.04
Object field φ (mm)	135.3
Working distance (mm)	280
Optical structure	Double telecentric
Magnification (X)	0.17



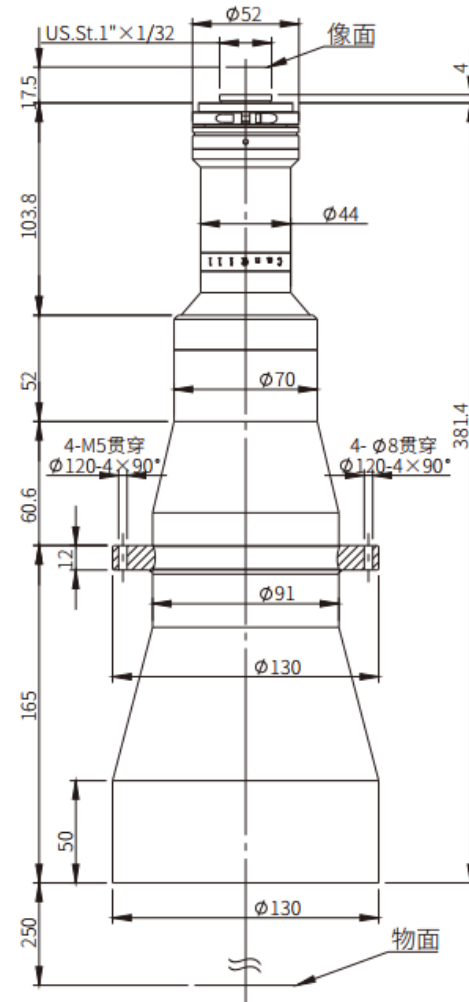
## XF-PTL12223-C

Chip type	4/3"
Chip length	18
Chip width	13.5
diagonal	22.5
Long object field of view	94.7
Wide field of view	71.1
Total length of lens (mm)	420
Maximum diameter (mm)	166
O/I (mm)	697.5
Lens interface	C Mount
Optical distortion (%)	0.019
Resolution (μm)	27.73
aperture	F8
Depth of field (mm)	24.4
Image field (mm)	23
Telecentric design value (°)	0.04
Object field φ (mm)	121.1
Working distance (mm)	260
Optical structure	Double telecentric
Magnification (X)	0.19



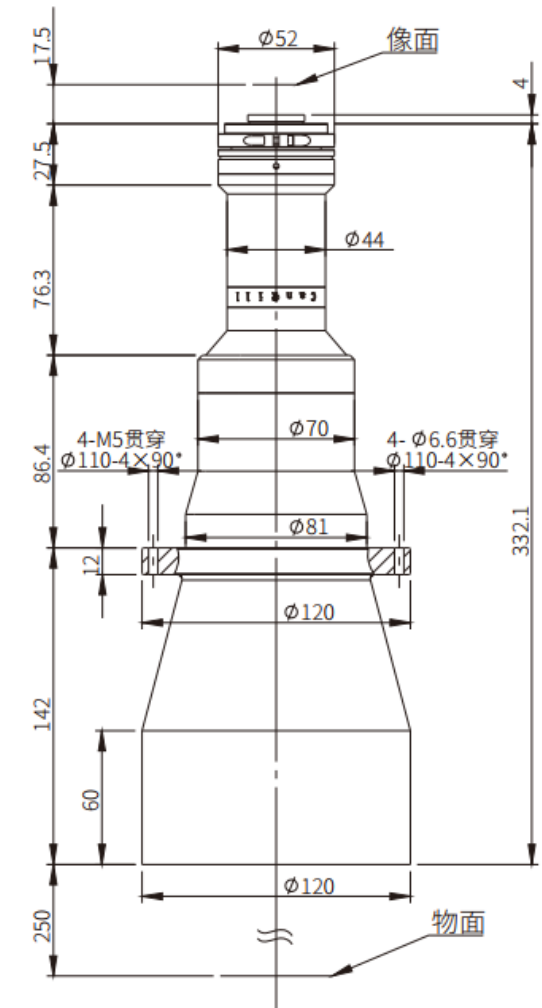
## XF-PTL11023-C

Chip type	4/3"
Chip length	18
Chip width	13.5
diagonal	22.5
Long object field of view	85.3
Wide field of view	64
Total length of lens (mm)	381.4
Maximum diameter (mm)	130
O/I (mm)	648.9
Lens interface	C Mount
Optical distortion (%)	0.015
Resolution (μm)	25.04
aperture	F8
Depth of field (mm)	19.8
Image field (mm)	23
Telecentric design value (°)	0.04
Object field φ (mm)	109
Working distance (mm)	250
Optical structure	Double telecentric
Magnification (X)	0.211



## XF-PTL09223-C

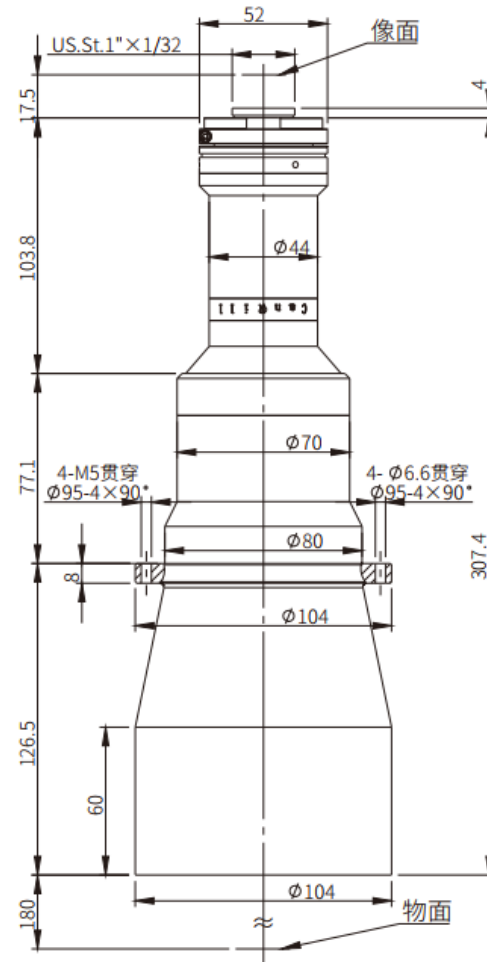
Chip type	4/3"
Chip length	18
Chip width	13.5
diagonal	22.5
Long object field of view	70.9
Wide field of view	53.1
Total length of lens (mm)	332.1
Maximum diameter (mm)	120
O/I (mm)	599.6
Lens interface	C Mount
Optical distortion (%)	0.017
Resolution (μm)	20.82
aperture	F8
Depth of field (mm)	13.7
Image field (mm)	23
Telecentric design value (°)	0.04
Object field φ (mm)	90.6
Working distance (mm)	250
Optical structure	Double telecentric
Magnification (X)	0.254





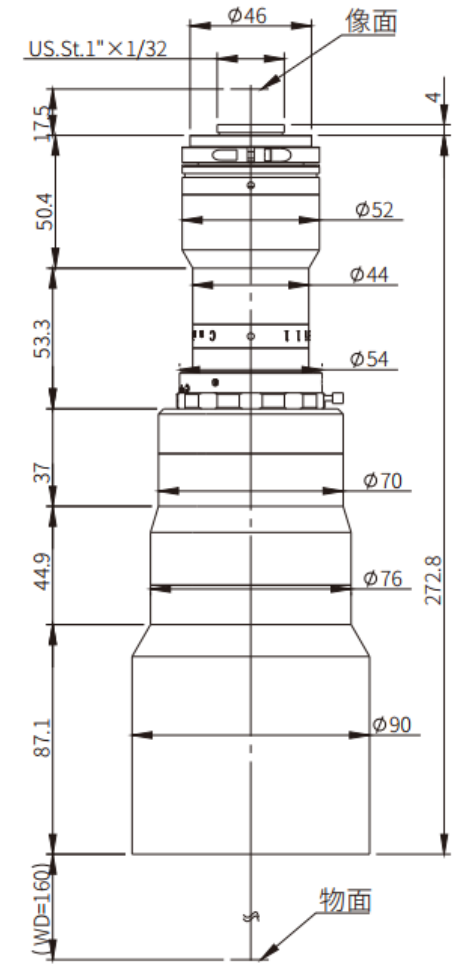
## XF-PTL08023-C

Chip type	4/3"
Chip length	18
Chip width	13.5
diagonal	22.5
Long object field of view	62.1
Wide field of view	46.6
Total length of lens (mm)	307.4
Maximum diameter (mm)	104
O/I (mm)	504.9
Lens interface	C Mount
Optical distortion (%)	0.013
Resolution (μm)	18.18
aperture	F8
Depth of field (mm)	10.5
Image field (mm)	23
Telecentric design value (°)	0.03
Object field φ (mm)	79.3
Working distance (mm)	180
Optical structure	Double telecentric
Magnification (X)	0.29



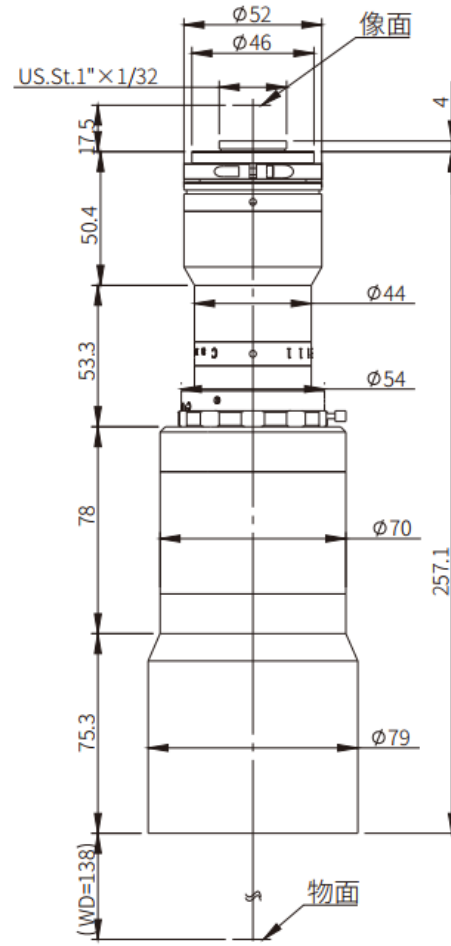
## XF-PTL06523-C-VI

Chip type	4/3"
Chip length	18
Chip width	13.5
diagonal	22.5
Long object field of view	50.4
Wide field of view	37.8
Total length of lens (mm)	272.8
Maximum diameter (mm)	90
O/I (mm)	450.3
Lens interface	C Mount
Optical distortion (%)	0.013
Resolution (μm)	12-83.11
aperture	F6.5-F45
Depth of field (mm)	5.6-39.2
Image field (mm)	23
Telecentric design value (°)	0.03
Object field φ (mm)	64.4
Working distance (mm)	160
Optical structure	Double telecentric
Magnification (X)	0.357



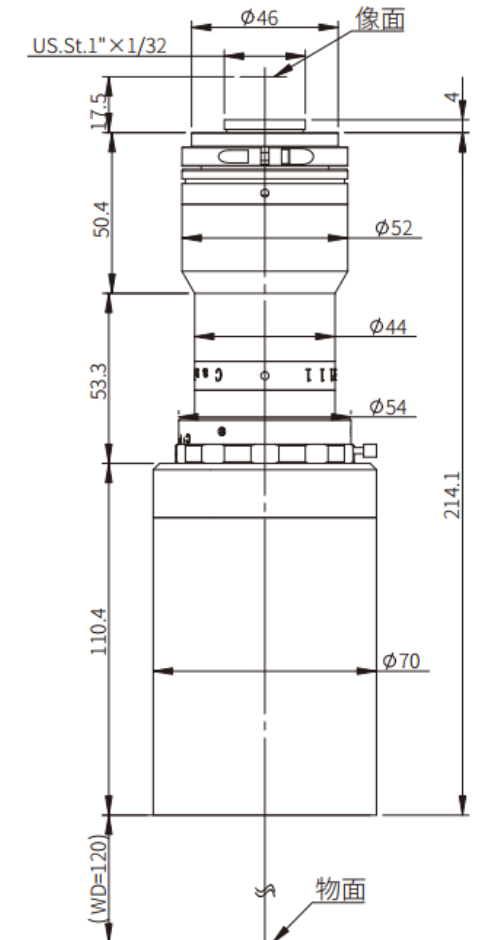
## XF-PTL05523-C-VI

Chip type	4/3"
Chip length	18
Chip width	13.5
diagonal	22.5
Long object field of view	42.7
Wide field of view	32
Total length of lens (mm)	257.1
Maximum diameter (mm)	79
O/I (mm)	412.6
Lens interface	C Mount
Optical distortion (%)	0.026
Resolution (μm)	10.2-70.23
aperture	F6.5-F45
Depth of field (mm)	04월 28일
Image field (mm)	23
Telecentric design value (°)	0.04
Object field φ (mm)	54.5
Working distance (mm)	138
Optical structure	Double telecentric
Magnification (X)	0.422



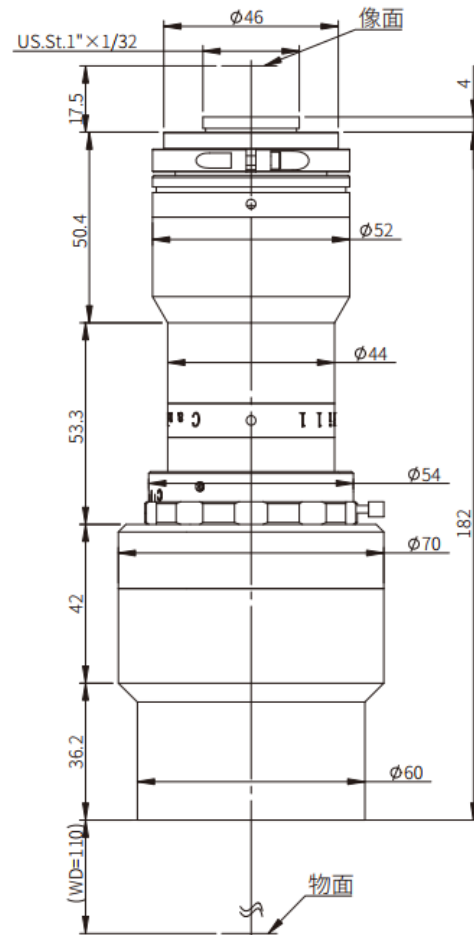
## XF-PTL04523-C-VI

Chip type	4/3"
Chip length	18
Chip width	13.5
diagonal	22.5
Long object field of view	34.9
Wide field of view	26.2
Total length of lens (mm)	214.1
Maximum diameter (mm)	70
O/I (mm)	351.6
Lens interface	C Mount
Optical distortion (%)	0.017
Resolution (μm)	8.3-57.47
aperture	F6.5-F45
Depth of field (mm)	2.7-18.8
Image field (mm)	23
Telecentric design value (°)	0.03
Object field φ (mm)	44.6
Working distance (mm)	120
Optical structure	Double telecentric
Magnification (X)	0.516



## XF-PTL03723-C-VI

Chip type	4/3"
Chip length	18
Chip width	13.5
diagonal	22.5
Long object field of view	28.4
Wide field of view	21.3
Total length of lens (mm)	182
Maximum diameter (mm)	70
O/I (mm)	309.5
Lens interface	C Mount
Optical distortion (%)	0.023
Resolution (μm)	6.8-46.82
aperture	F6.5-F45
Depth of field (mm)	1.8-12.5
Image field (mm)	23
Telecentric design value (°)	0.03
Object field φ (mm)	36.3
Working distance (mm)	110
Optical structure	Double telecentric
Magnification (X)	0.634





큐브아이엔티

Machine Vision System & Component

# THANK YOU

제품관련 문의 및 상담은 하단의 연락처로 문의주시면  
언제나 친절하고 성실히 응대해 드립니다.

담당: 이재훈 팀장 / M : 010-6606-8116 / E : int@cubefa.co.kr